

# Repositioning the Urban Highway - 23 February 2012

Alex Krieger - Chan Krieger NBBJ – Harvard University









# Three “Big Digs”

1. Depression of the Central Artery, Boston  
1988-2008
2. Cheonggyecheon River Restoration, Seoul,  
Korea 2003-2006
3. The Redesign of the Bund, Shanghai, China  
2007-2010





# **1. Boston's Central Artery**

**Constructed  
1949-1955**

**Demolished,  
Rebuilt – and  
Widened –  
Underground  
1988-2008**





down the prices of these items. You get one of today's greatest bargains

**ETHYL CORPORATION** New York 17, N. Y.

*Colliers Magazine, 1955*



**BY THE SEA:** Seaside towns have a special lure for travelers. The picturesque sight



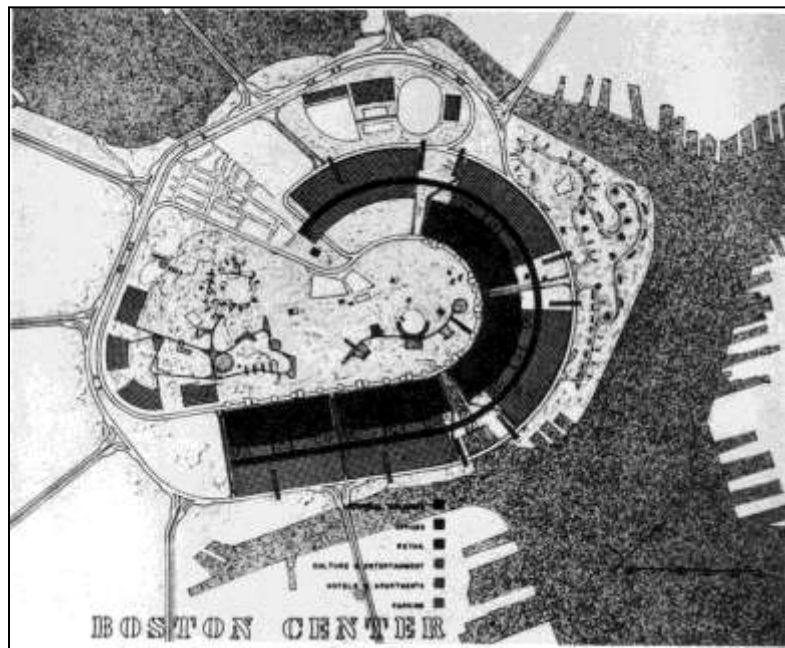
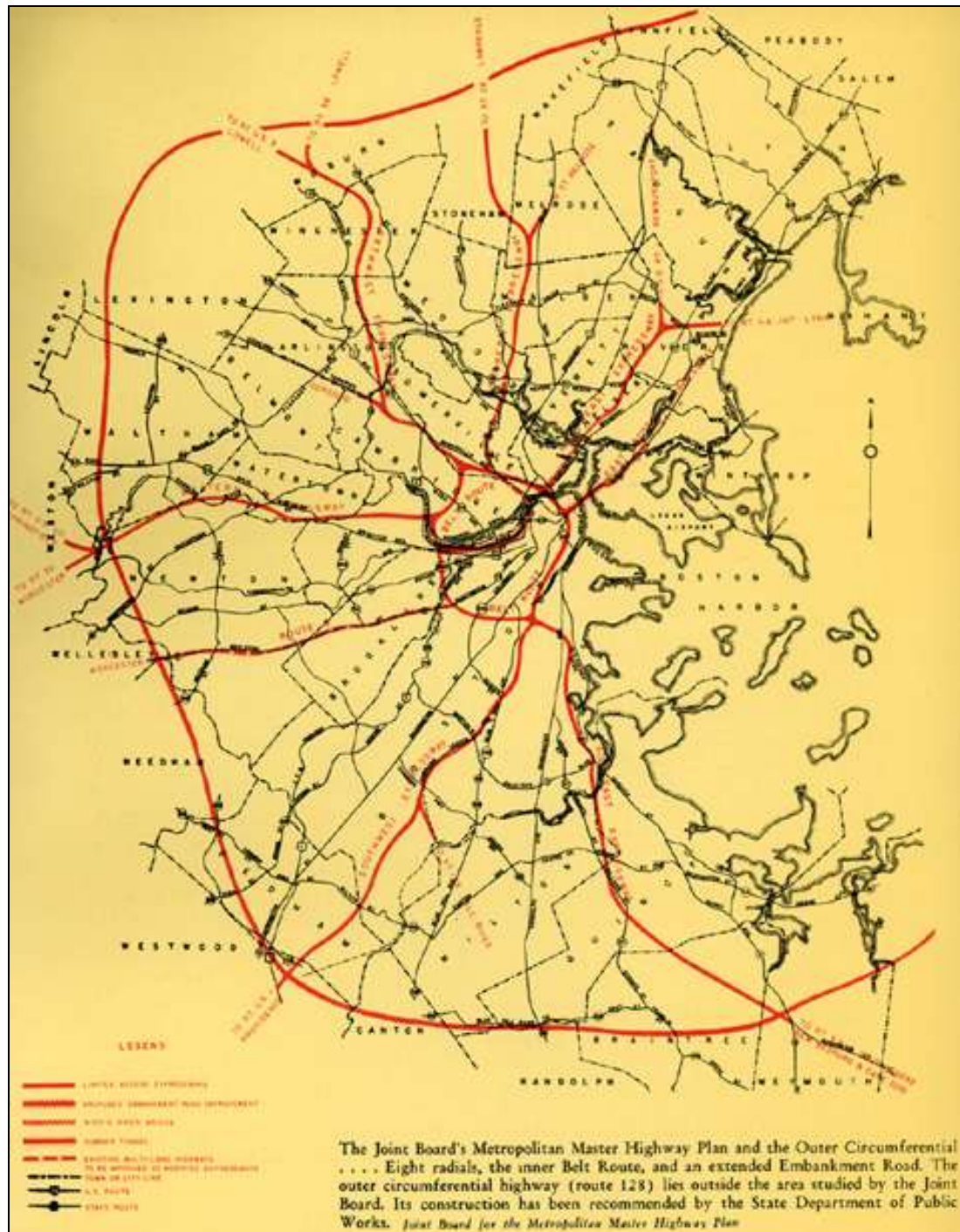
# BOSTON GETS SKYROAD SOON



*Boston Highways*  
Construction to Start  
on "Belt" Plan in  
6 Weeks, Says Devel

Construction of Boston's long-delayed  
central artery will begin within the next six  
weeks, it was announced today.  
The first section of the city's "skyroad  
way" will be built with \$33,000,000 which the  
Legislature appropriated last session as part of  
a state-wide \$100,000,000 accelerated highway  
program.

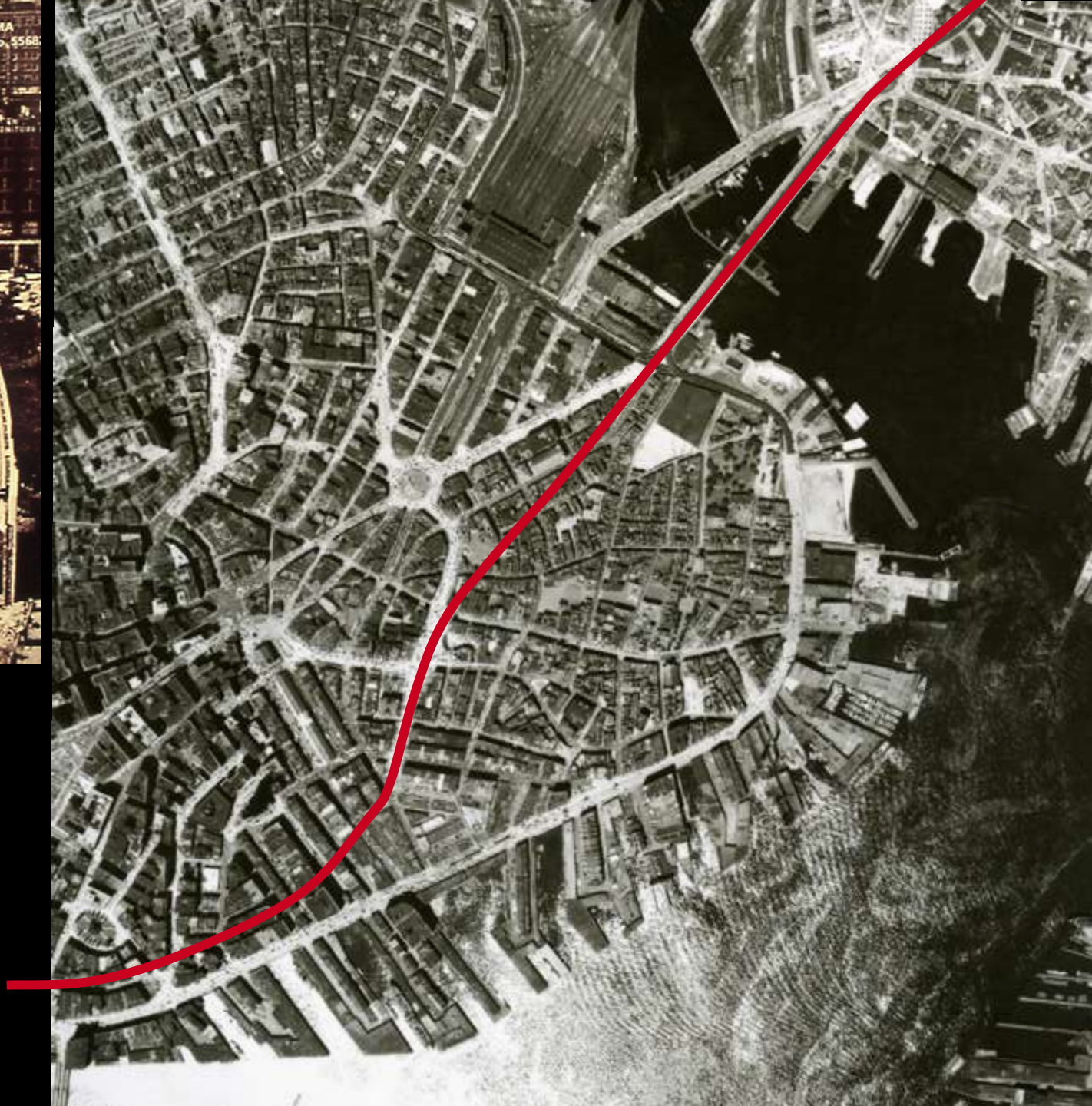
The 1948 Joint Board Metropolitan Master Highway Plan  
proposed two transportation rings (the 6th & 7th  
proposed) for Boston: What would become I-28 and an  
Inner Belt, the 1st, & only, segment of which was built as  
the Central Artery







Central Artery  
Construction 1949-55















## Central Artery

Designed to a Capacity of 65,000 vehicles/day, within a decade was carrying over 175,000 vehicles/day







Seattle

Boston

# GOOD ROADS EVERYWHERE

FOUR-FOLD SYSTEM OF HIGHWAYS

National Highways - State Highways - County Roads - Township or Town Roads

"A PAVED UNITED STATES IN OUR DAY"

## ORGANIZATION

The National Highway System is organized as follows: National Highways, State Highways, County Roads, Township or Town Roads. Each system built and maintained by its own political authority.



250,000 MILES OF NATIONAL HIGHWAYS

THIS MAP SHOWS PART OF A SYSTEM OF 250,000 MILES OF NATIONAL HIGHWAYS ASSOCIATED BY THE NATIONAL HIGHWAYS ASSOCIATION. TO BE BUILT AND FOREVER MAINTAINED BY THE UNITED STATES GOVERNMENT. They will relieve the State, County, Town or Township of present road costs. They will be built on the best available routes. They will be built on the best available routes. They will be built on the best available routes.



## EISENHOWER INTERSTATE SYSTEM



The Clay Committee presents its report with recommendations concerning the financing of a national interstate highway network to President Eisenhower on Jan. 11, 1955. Standing behind the president are (from left) Gen. Lucius Clay, Frank Turner, Steve Betchel, Sloan Colt, William Roberts, and Dave Beck.

## UNITED STATES TOURING MAP

SHOWING 100,000 MILES OF PRINCIPAL TRAVELED HIGHWAYS

ASSOCIATED TOURS OF THE AUTOMOBILE CLUB OF AMERICA

NEW ENGLAND, ATLANTIC COAST, FLORIDA AND GULF COAST, COVERING 24,000 MILES OF HIGHWAYS

NATIONAL PARK-TO-PARK HIGHWAY

4,000 Miles - Starts in 11 Parks, 1700 Miles

24 East-West Transcontinental Highways Covering 50,000 Miles

24 North-South Transcontinental Highways Covering 50,000 Miles

12 Diagonal Transcontinental Highways Covering 15,000 Miles

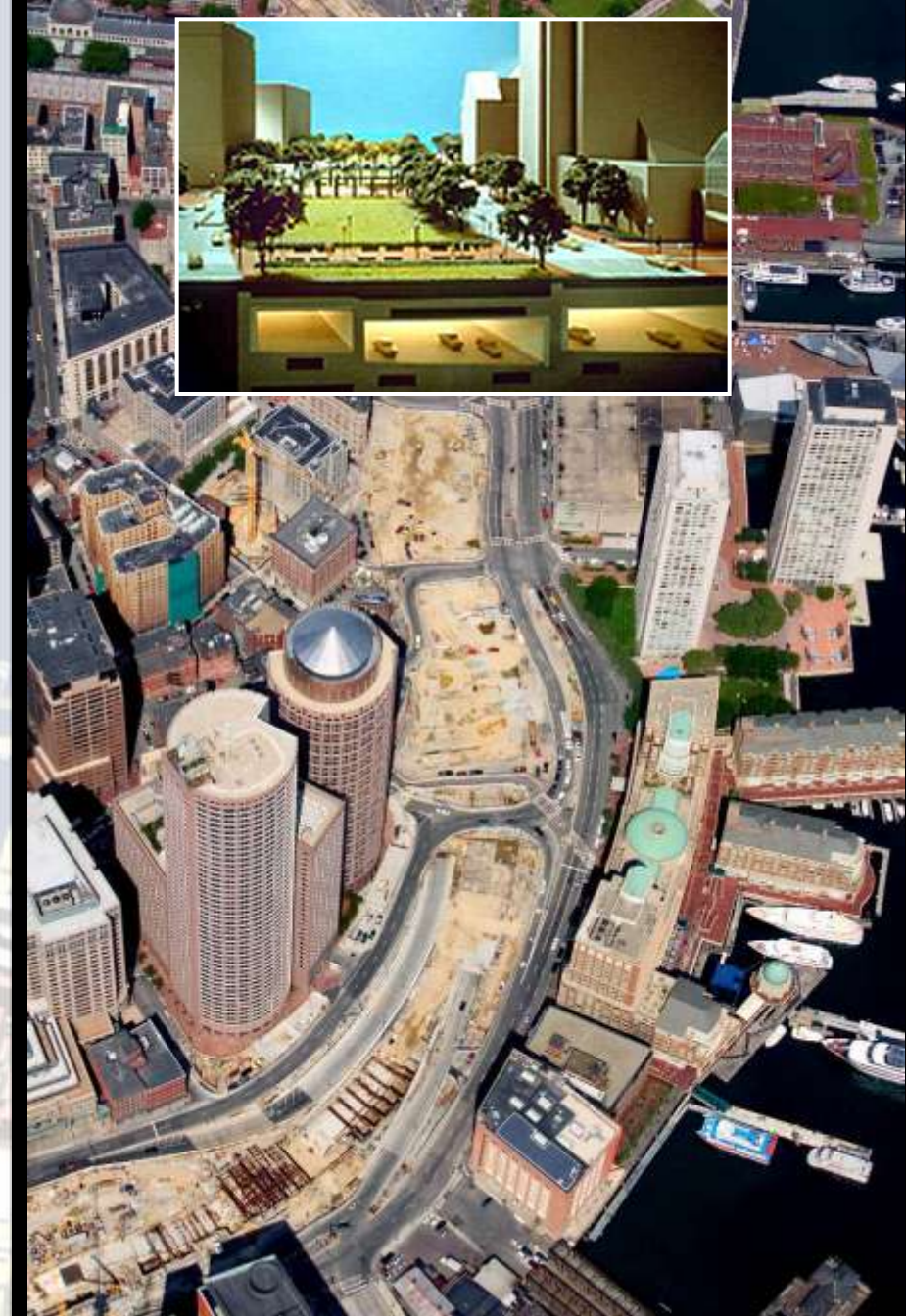
Other Main Traveled Highways Covering 80,000 Miles

ISSUED BY THE AUTOMOBILE CLUB OF AMERICA NATIONAL HIGHWAYS ASSOCIATION









**Rose Kennedy Greenway Development Parcels**









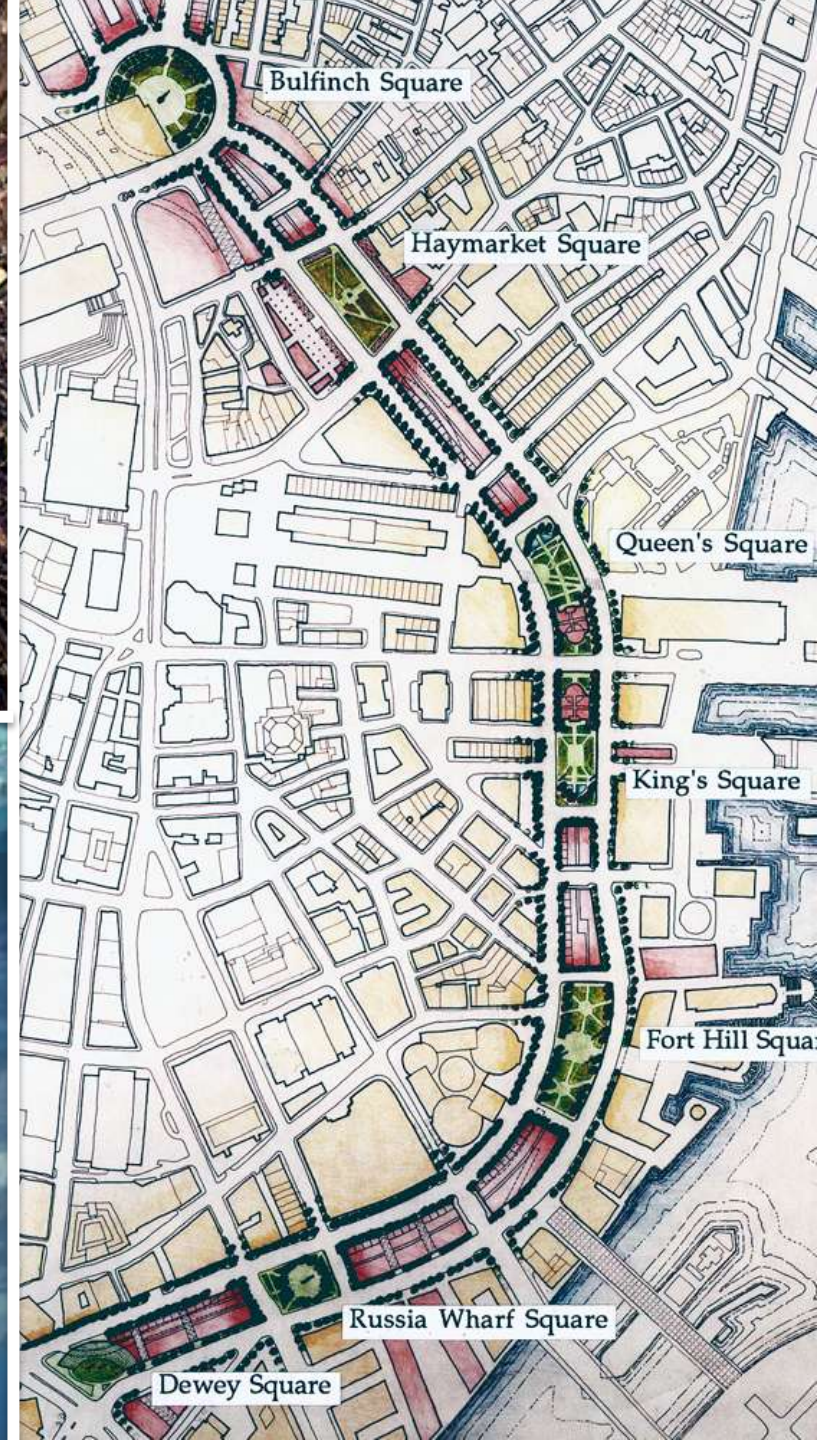














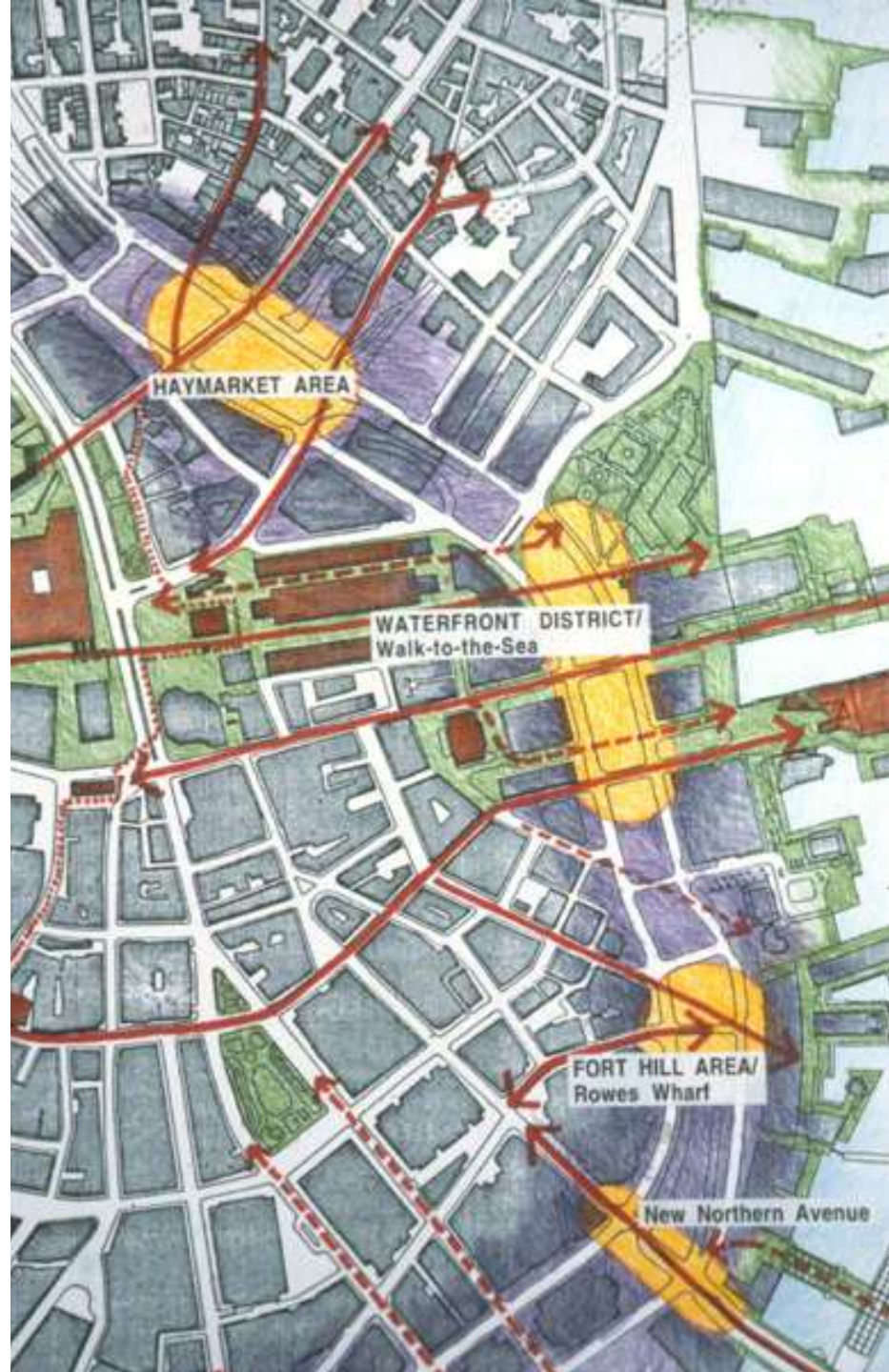


**The 'Seven Copley or Post Office Squares' Plan for the Central Artery**



































# HARBOR PARK PAVILION

Boston Massachusetts





# CENTRAL WHARF PLAZA

## Boston Massachusetts











BEFORE



AFTER









Reconstruction of the Bund, Shanghai  
2007-2010

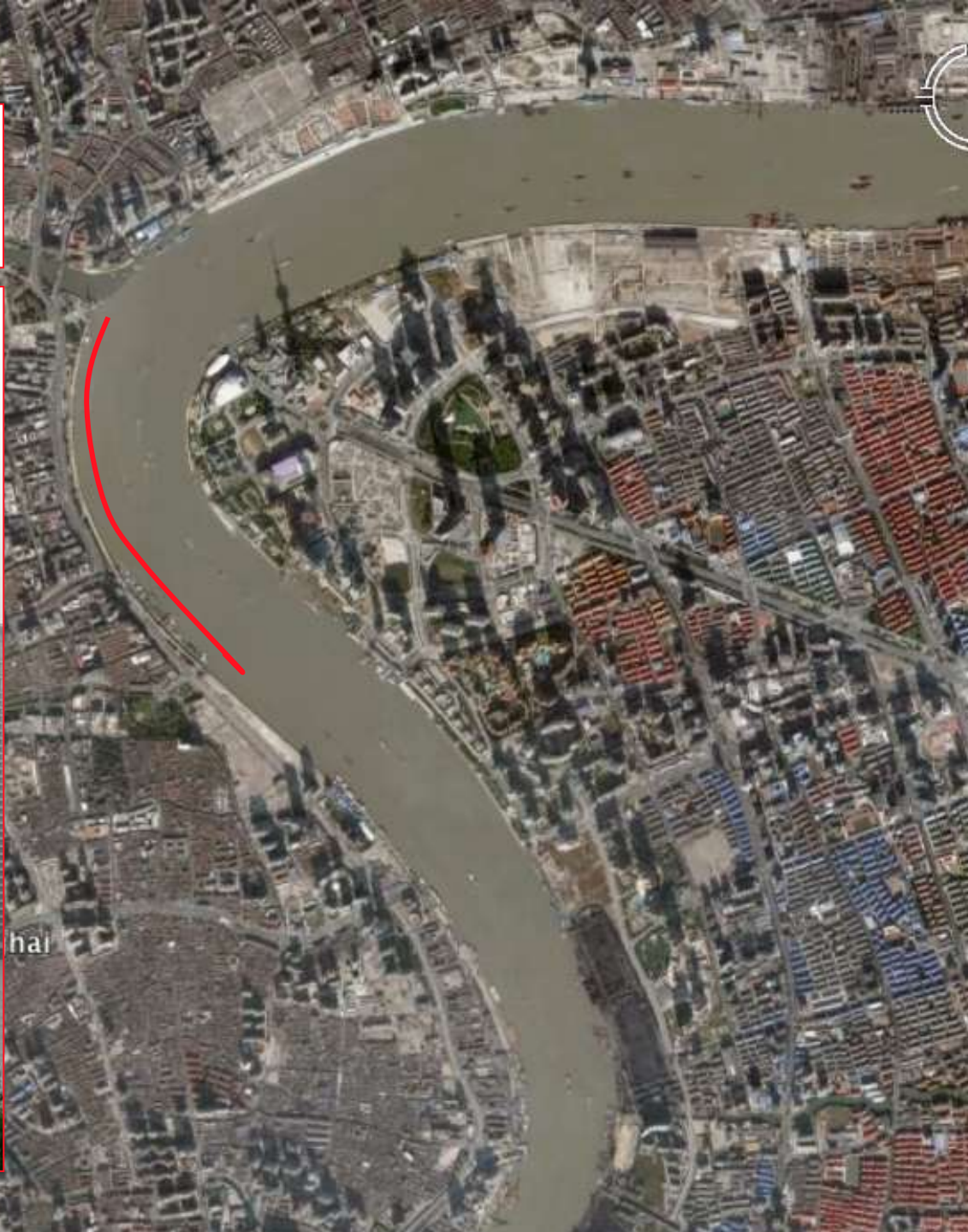
# 上海市外滩滨水区城市设计

















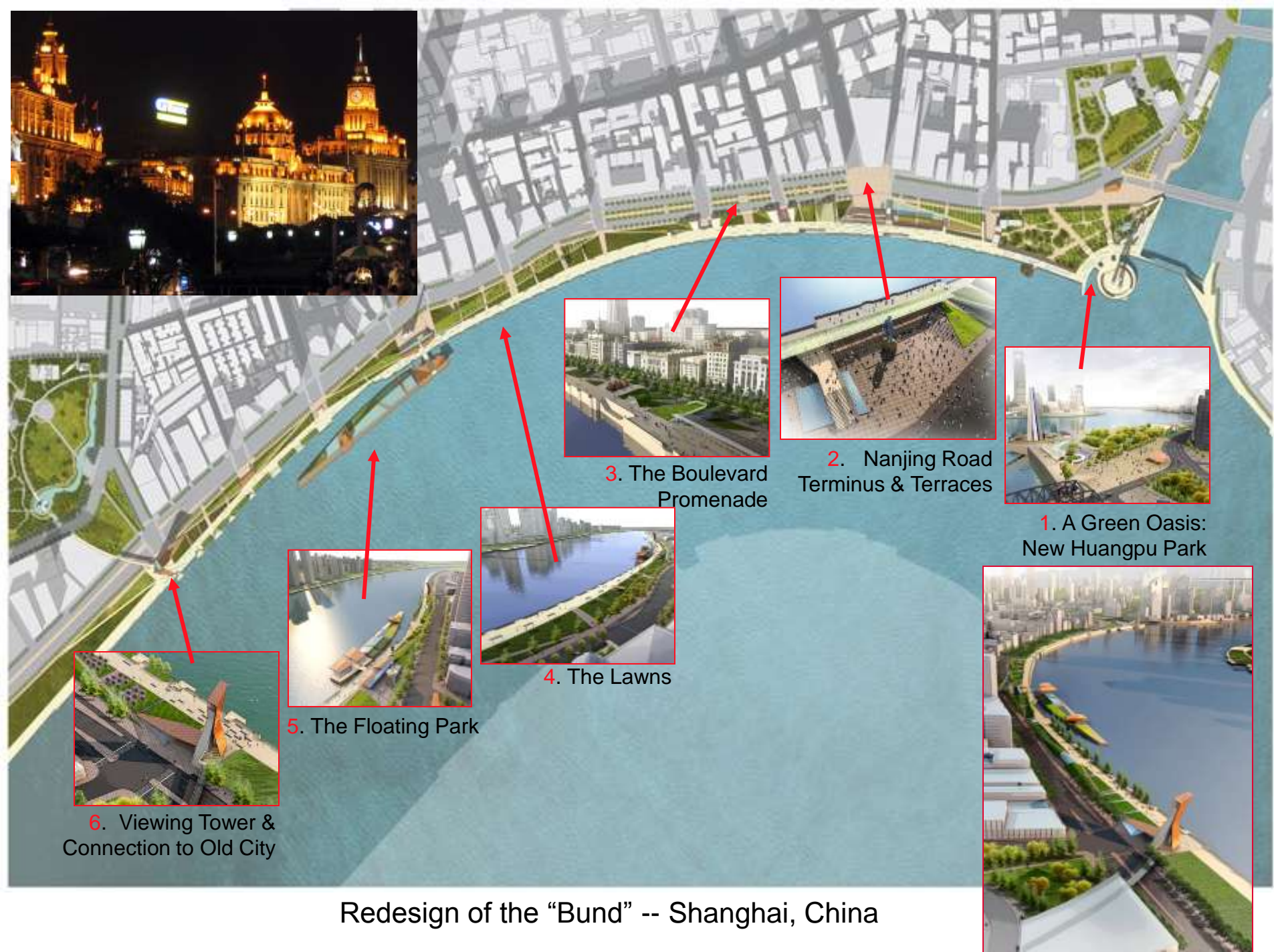
View of bund seen from war memorial (Shanghai)



(海上) 平和塔より望む黄浦江の展望  
View of bund seen from war memorial (Shanghai)

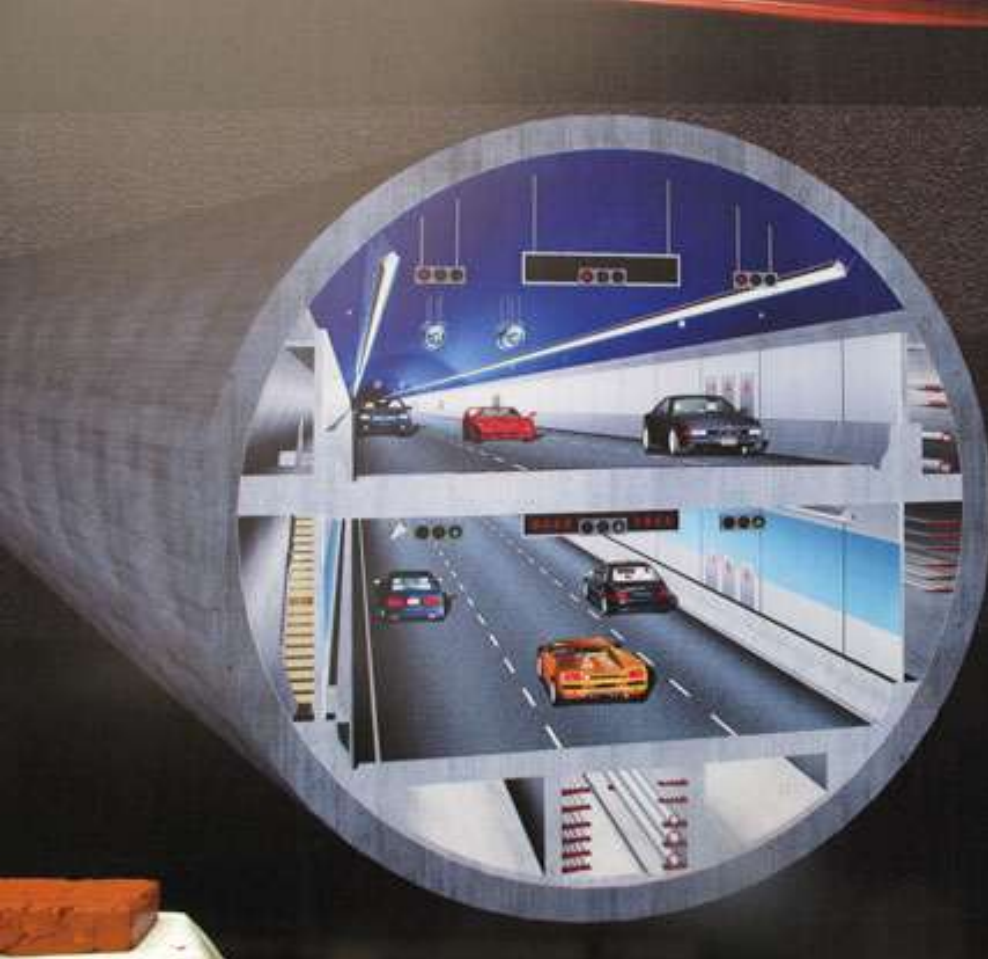




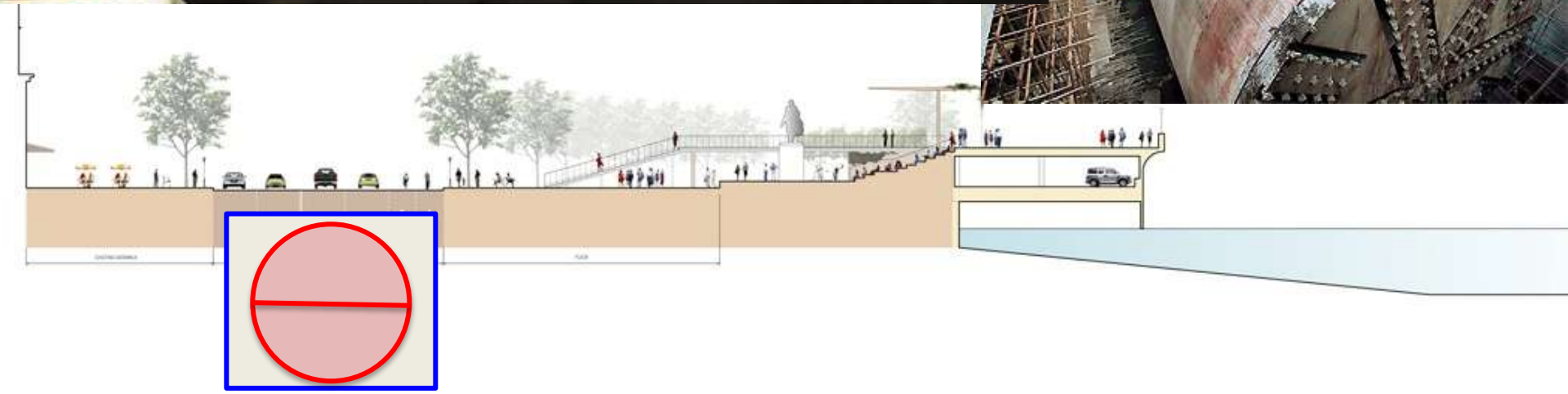


Redesign of the “Bund” -- Shanghai, China





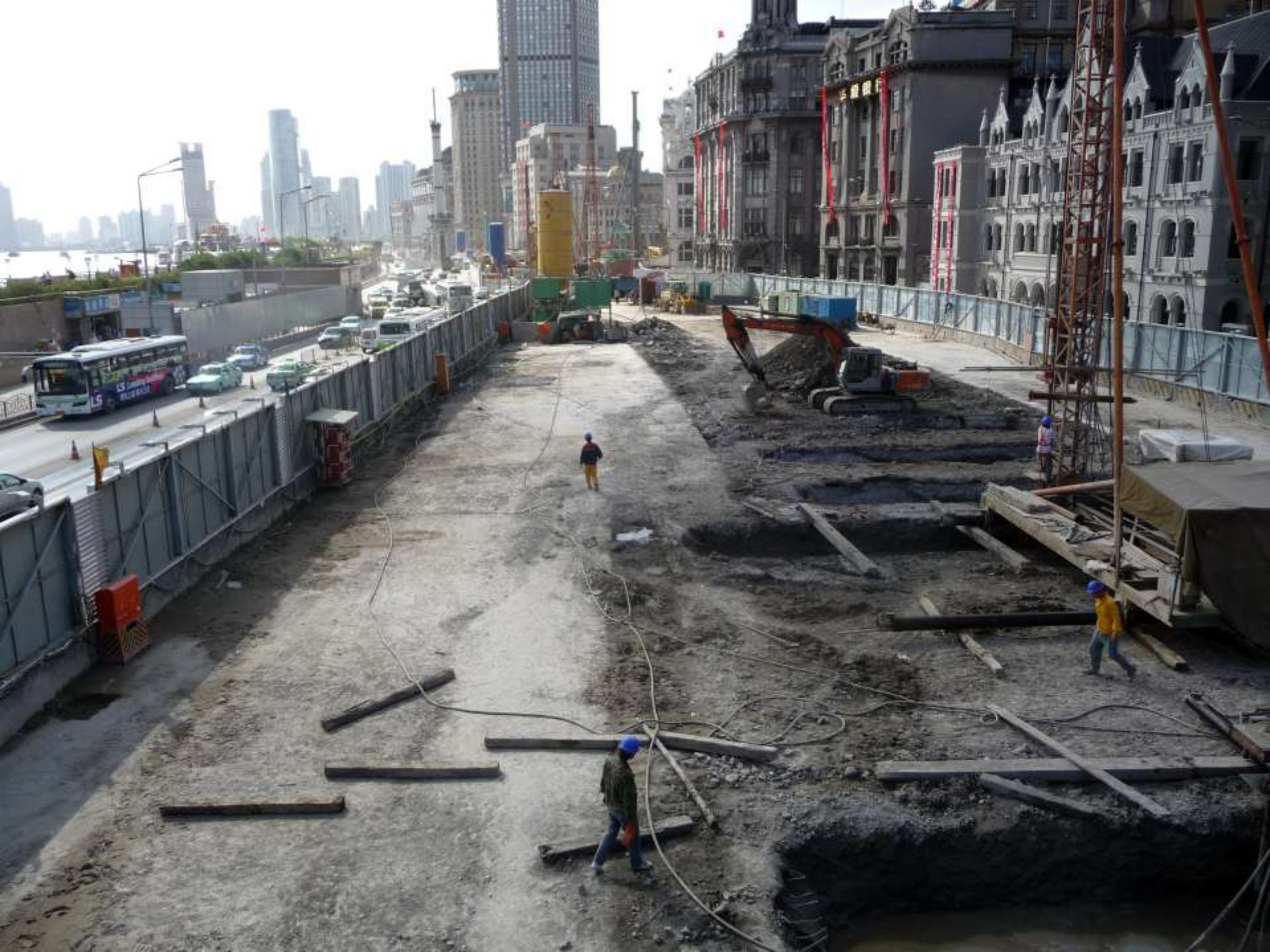
上海外滩通道























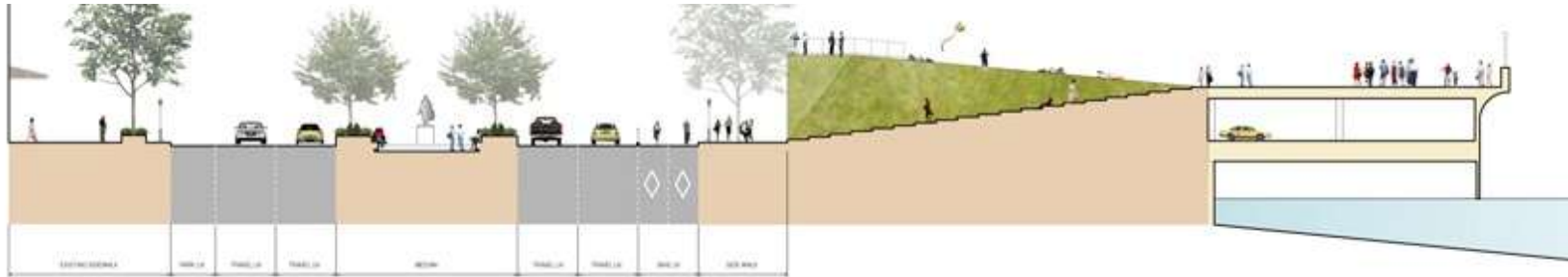
Public Space to be Gained



1.



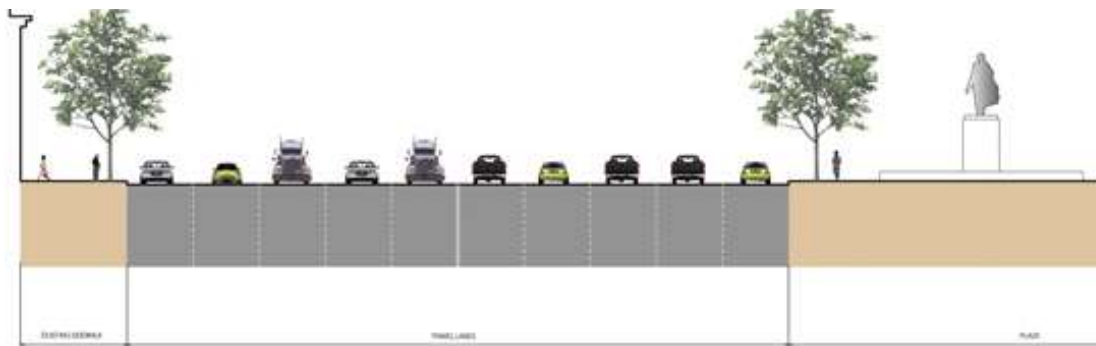
2.



3.



Existing  
Section





### 3. The Boulevard Promenade

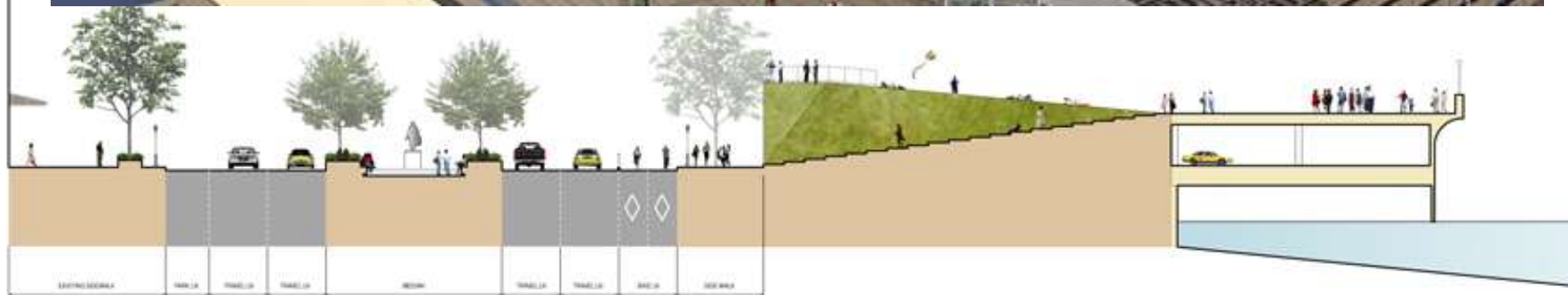








### 3. The Boulevard Promenade





### 3. The Boulevard Promenade









1. A Green  
Oasis: New  
Huangpu Park



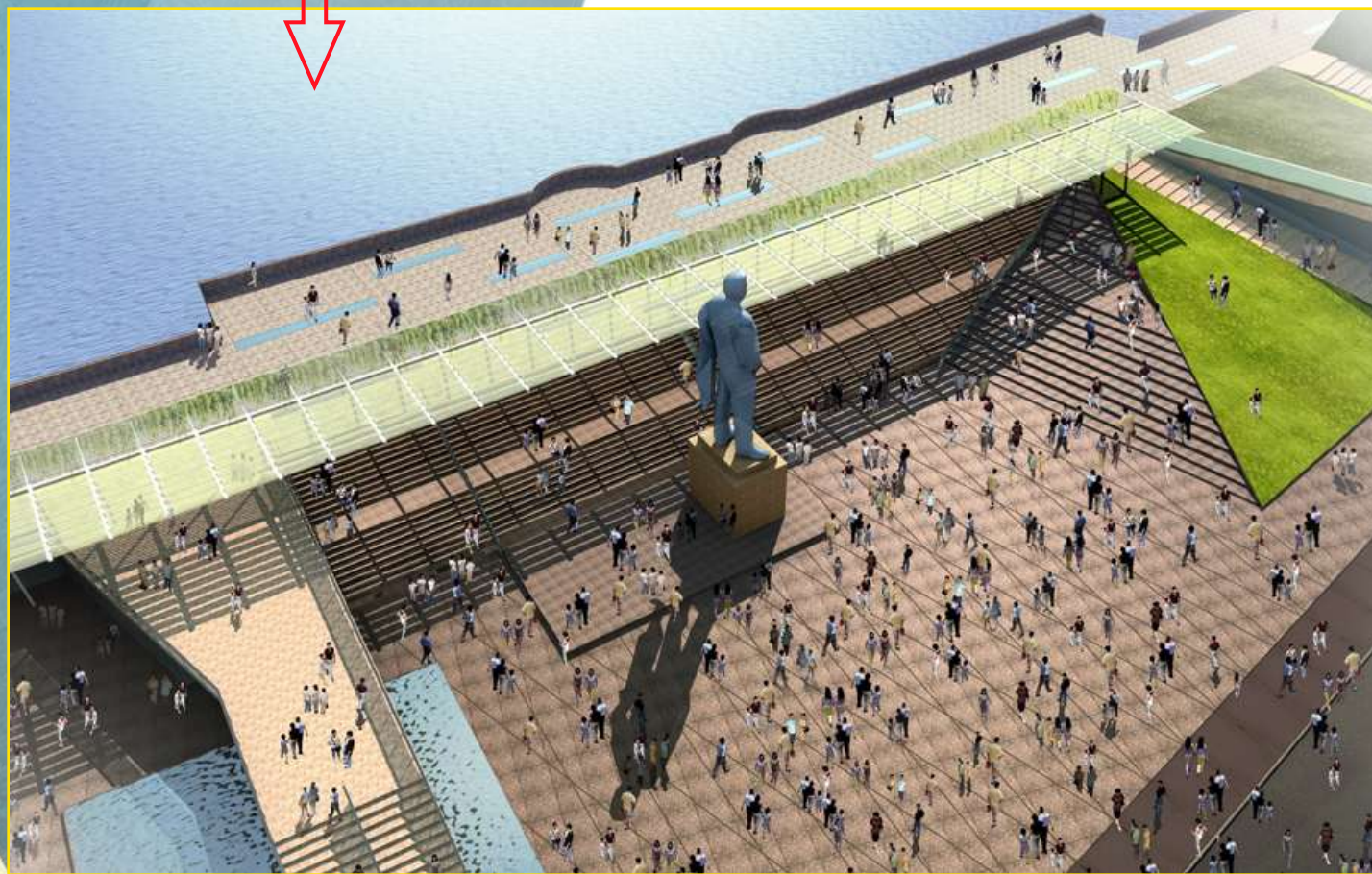
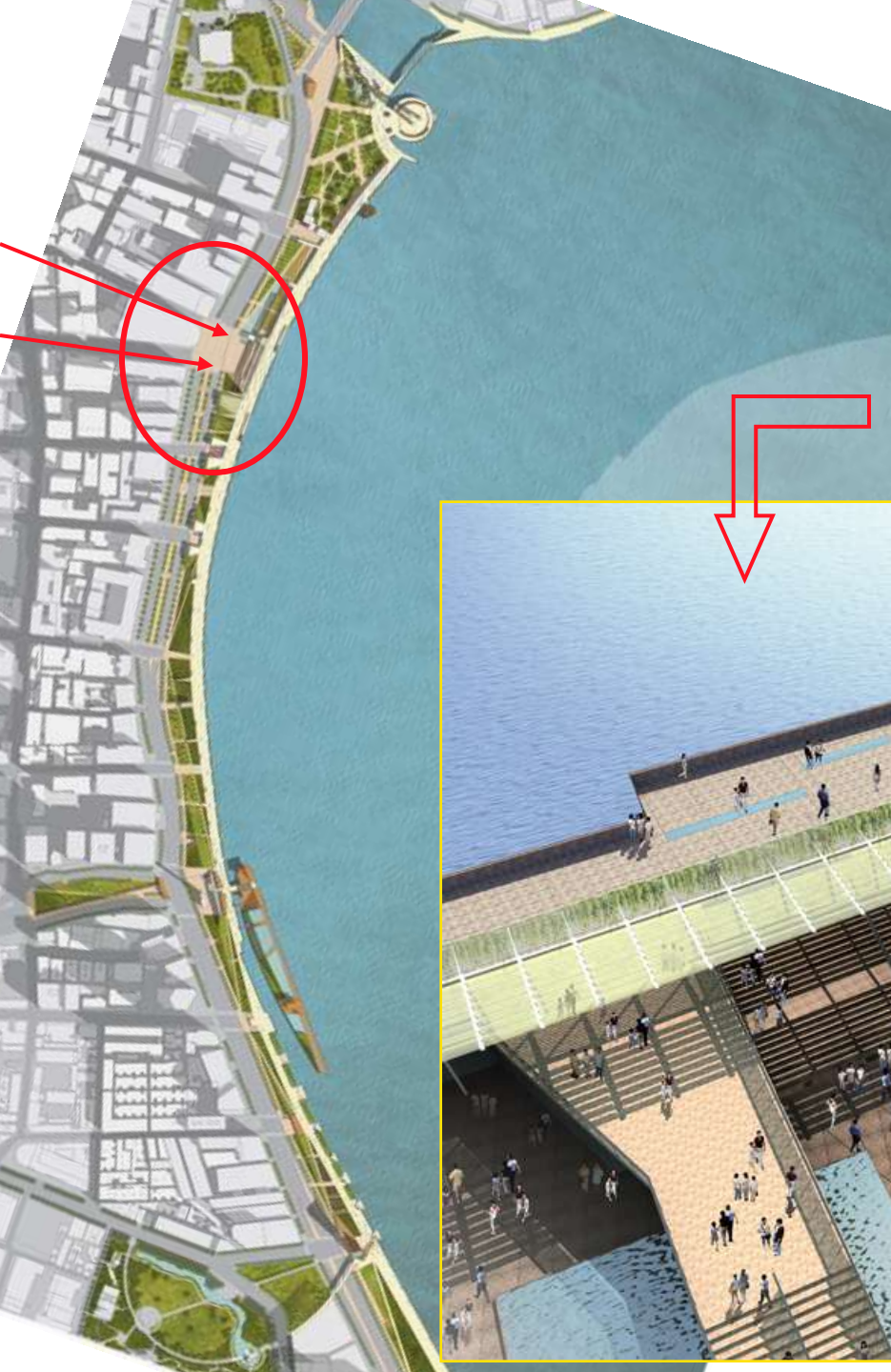
SECTION - NORTH 1







## 2. Nanjing Road Terminus & Terraces









Lovers Wall from Zhongshan Dong Road  
从中山东路看情人墙









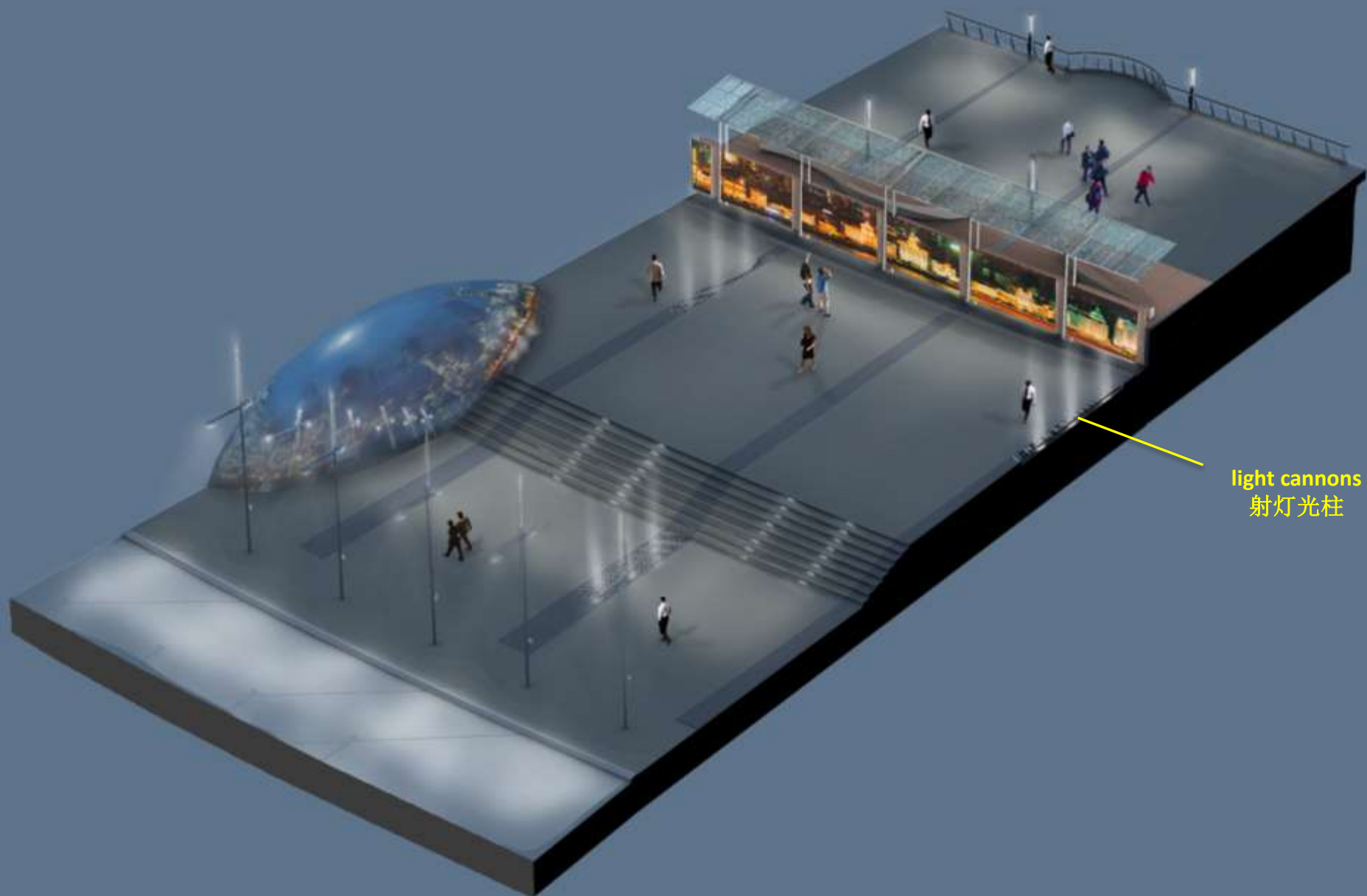
**Financial Plaza from City**  
**从城市中俯瞰金融广场**



**OPTION 2 — All Cultural Exhibit Screens**  
**方案二 三部分均为文化展示屏幕**



# Financial Plaza systems 金融广场空间系统与结构



light cannons  
射灯光柱

NIGHT LIGHTING 夜间照明



Financial Plaza night 金融广场夜景







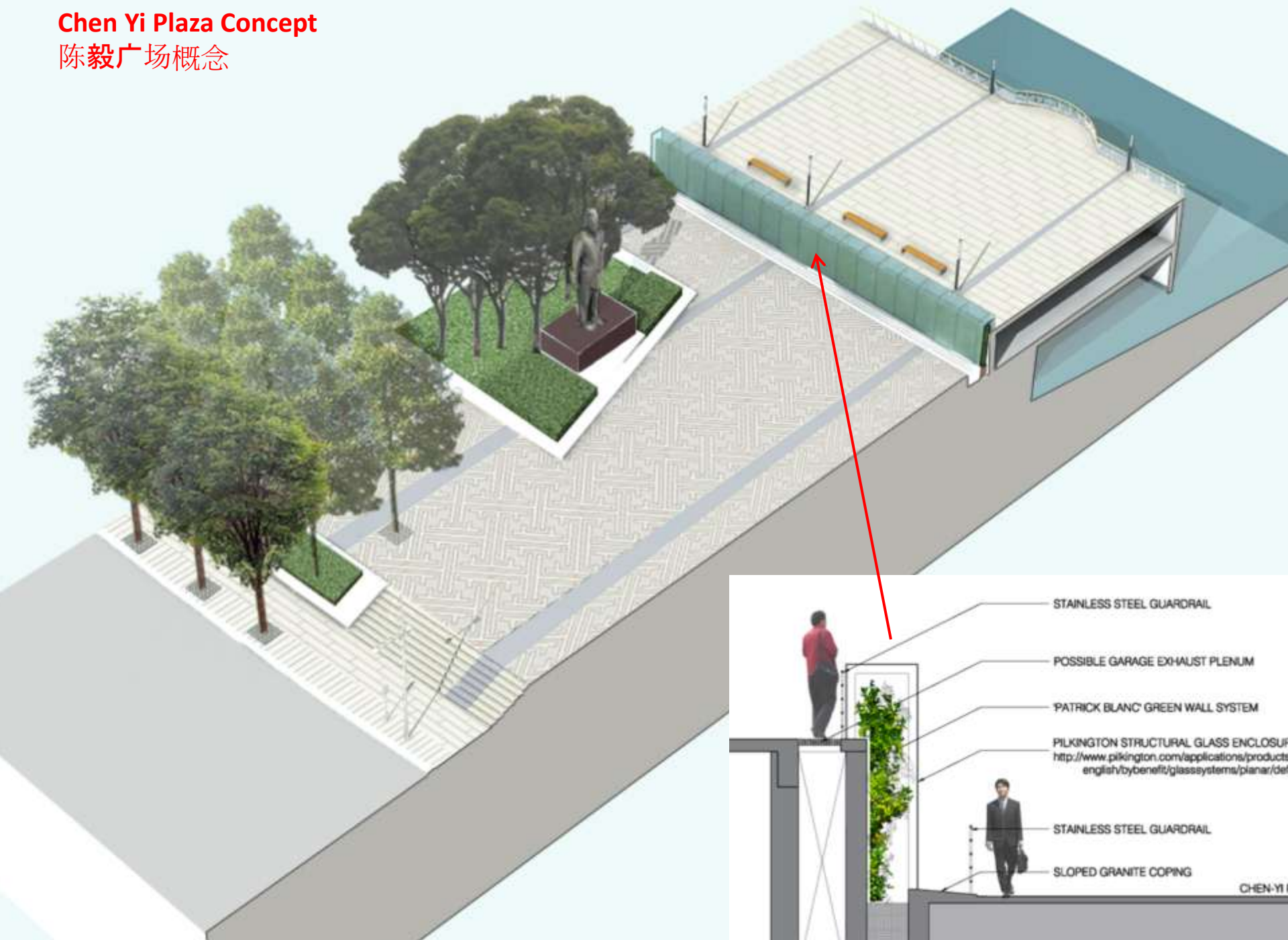


Financial Plaza night 金融广场夜景



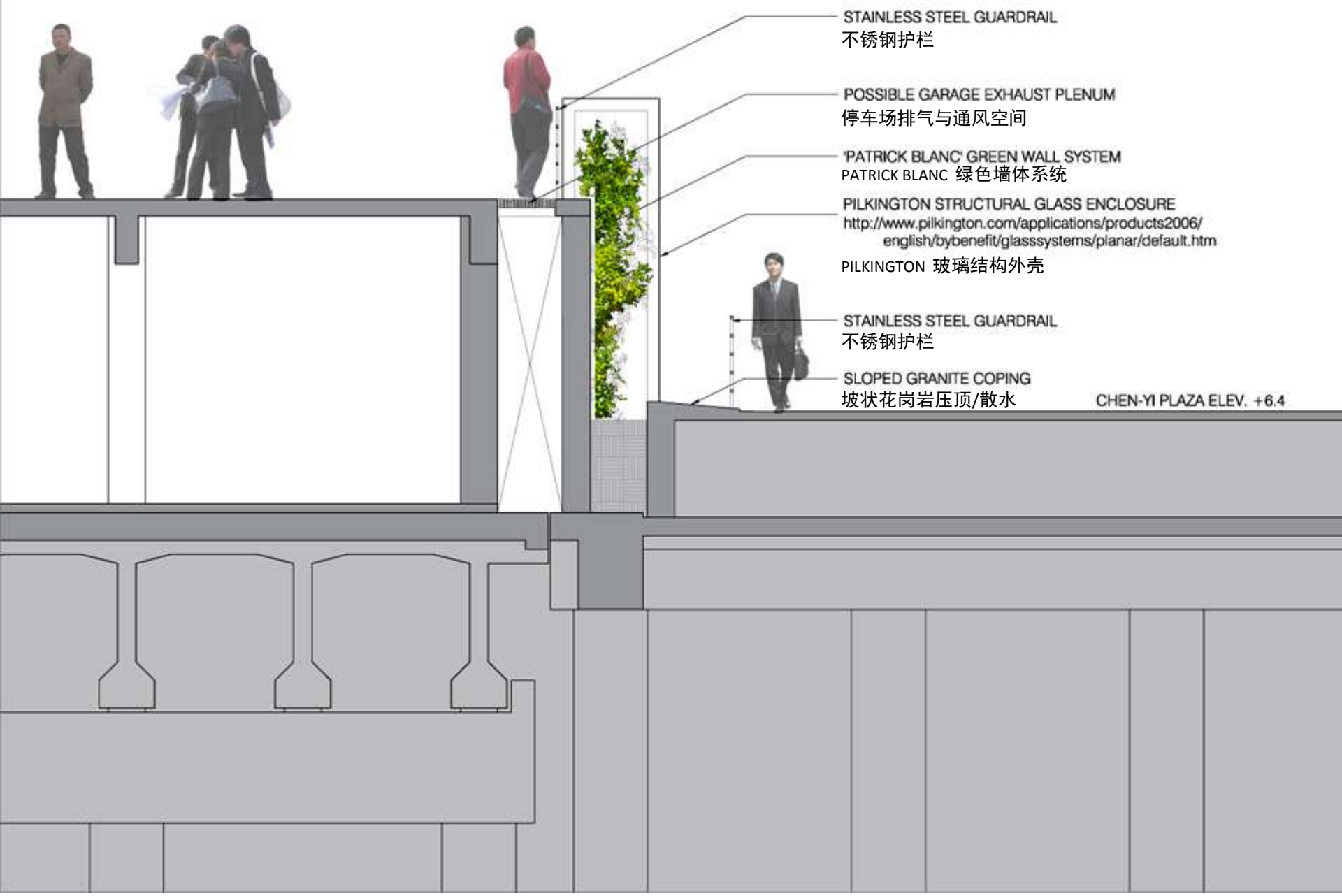


Chen Yi Plaza Concept  
陈毅广场概念





Phyto Wall Section  
植被墙体剖面图



STAINLESS STEEL GUARDRAIL  
不锈钢护栏

POSSIBLE GARAGE EXHAUST PLENUM  
停车场排气与通风空间

'PATRICK BLANC' GREEN WALL SYSTEM  
PATRICK BLANC 绿色墙体系统

PILKINGTON STRUCTURAL GLASS ENCLOSURE  
<http://www.pilkington.com/applications/products2006/english/bybenefit/glasssystems/planar/default.htm>  
PILKINGTON 玻璃结构外壳

STAINLESS STEEL GUARDRAIL  
不锈钢护栏

SLOPED GRANITE COPING  
坡状花岗岩压顶/散水

CHEN-YI PLAZA ELEV. +6.4



Chen Yi Plaza at Night  
陈毅广场夜景













## 2. Nanjing Road Terminus & Terraces





2. Nanjing  
Road  
Terminus &  
Terraces





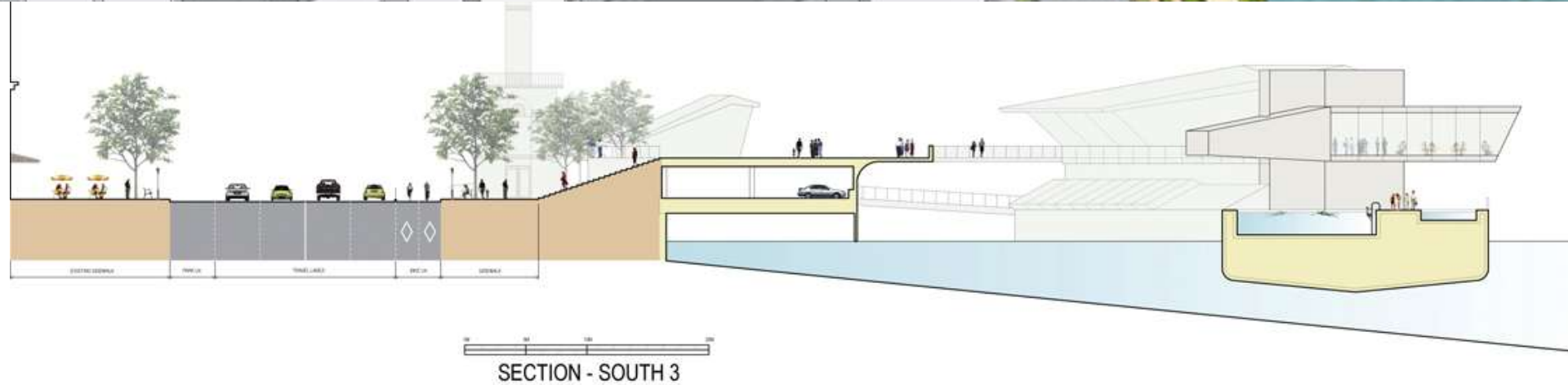
5.

# The Floating Park





# 5. The Floating Park





# 5. The Floating Park







5.  
The  
Floating  
Park  
Precedents



5.

# The Floating Park





# Six Special Places Along the Bund



## 6. View Tower & Connection to Old City









## 6. View Tower & Connection to Old City







6. View Tower & Connection to Old City











上海市外滩滨水区城市设计

















## **Cheonggyecheon River Restoration, Seoul, Korea**

**2002-2007**





President of  
Korea Lee  
Myung-bak





The Embarcadero  
Expressway  
Damaged by the  
1989 Earthquake  
San Francisco &  
Demolished

















one of the many stepping stones along the  
cheonggyecheon



























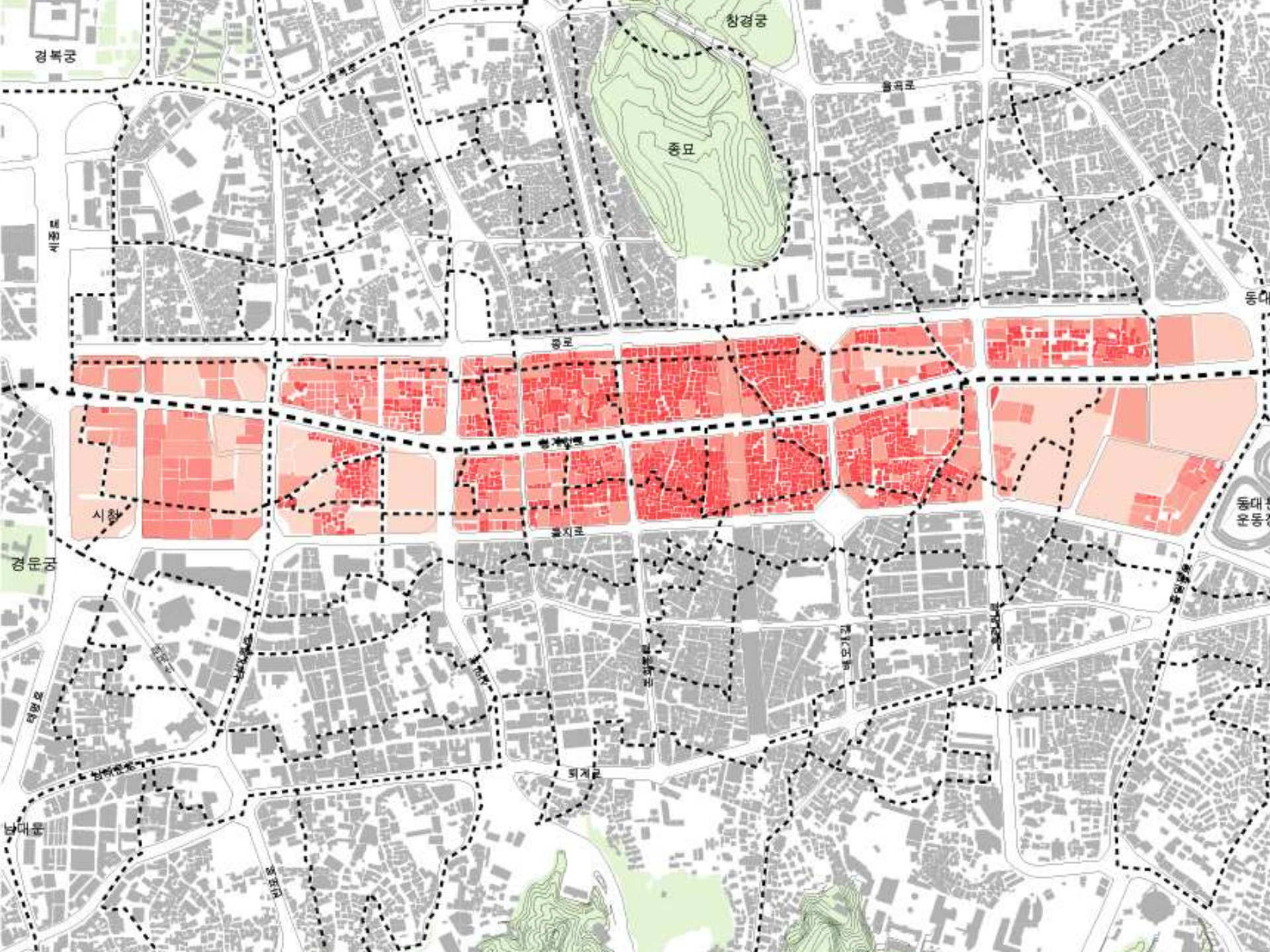




















정준이 사진집



# Three 'Big Digs':

## Rethinking the Urban Highway

Alex Krieger - Chann Krieger NBBJ – Harvard GSD

23 February 2012

1. Depression of the Central Artery, Boston  
1988-2008
2. Cheonggyecheon River Restoration, Seoul,  
Korea 2003-2006
3. The Redesign of the Bund, Shanghai, China  
2007-2010

